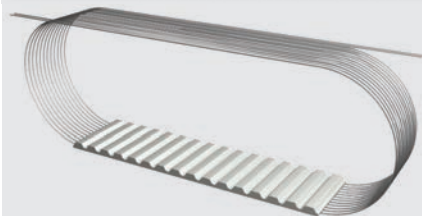


## Truly Endless "BFX"

## Specifications



Widths (mm) <small>In between widths available</small>	25	32	50	75	100	150
Lengths	See Standard Lengths Below Additional lengths available up to 22,000mm. In between lengths available starting at a minimum length of 1,100mm.					
Available Options	Nylon coating tooth side (PAZ), Double-sided (DL), Polyurethane cover (T-Cover), Extra thickness (DR)					
Tension Member Options	Steel standard Hi-flex steel Polyurethane sealed steel VA301 Stainless steel VA316 Hi-flex Stainless steel					

## Product Performance

Power Transmission	Rotational Speed	Peripheral Speed	Synchronous Pulley	Applications (Example)
Possible beyond 200 kW	Approx. 6500 min <sup>-1</sup>	Approx. 40 ms <sup>-1</sup>	From z=18	Heavy-duty drives, textile machinery, printing machinery, machine tools

## Specifications

Timing Belt	Pitch (mm)	Code	Ultimate Tensile Strength (N/10mm belt width)	Maximum Allowable Tensile Strength (N/10mm belt width)	Specific Belt Stiffness Steel Reinforced (Per unit width/length)	Specific Belt Mass (per 10mm belt width, steel reinforced)
AT-Series	AT20	BFX	8640	2160	5.40 x 10 <sup>5</sup> N	0.096 kg/m

## Minimum Number of Pulley Teeth and Idler Diameter

Pitch (mm)	Min. # of Pulley Teeth (no back bending)	Min. # of Pulley Teeth (with back bending)	Min. Diameter of Flat Idler running on tooth side (mm)	Min. Diameter of Flat Idler running on belt back (mm)
AT20	18	25	120	180

## Standard Material

TPUST1<sup>2)</sup>

## Standard Lengths

Pitch/Length Version	Number of Teeth	Pitch/Length Version	Number of Teeth	Pitch/Length Version	Number of Teeth
AT20 / 1000 SFX	50	AT20 / 2240 BFX	112	AT20 / 4760 BFX	238
AT20 / 1100 SFX	55	AT20 / 2360 BFX	118	AT20 / 5000 BFX	250
AT20 / 1200 SFX	60	AT20 / 2500 BFX	125	AT20 / 5300 BFX	265
AT20 / 1260 SFX	63	AT20 / 2660 BFX	133	AT20 / 5600 BFX	280
AT20 / 1500 BFX	75	AT20 / 2800 BFX	140	AT20 / 6000 BFX	300
AT20 / 1600 BFX	80	AT20 / 3000 BFX	150	AT20 / 6300 BFX	315
AT20 / 1700 BFX	85	AT20 / 3160 BFX	158	AT20 / 6700 BFX	335
AT20 / 1760 BFX	88	AT20 / 3360 BFX	168	AT20 / 7100 BFX	355
AT20 / 1800 BFX	90	AT20 / 3560 BFX	178	AT20 / 7500 BFX	375
AT20 / 1900 BFX	95	AT20 / 3760 BFX	188	AT20 / 8000 BFX	400
AT20 / 1960 BFX	98	AT20 / 4000 BFX	200	AT20 / 8500 BFX	425
AT20 / 2000 BFX	100	AT20 / 4260 BFX	213	AT20 / 9000 BFX	450
AT20 / 2120 BFX	106	AT20 / 4500 BFX	225		