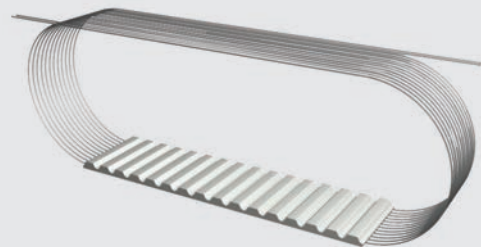


Truly Endless "BFX"



Specifications

Widths (mm) In between widths available	6	8	10	12	16	20	25	32	50	75	100
Lengths	See Standard Lengths Below Additional lengths available up to 1,710mm. In between lengths available starting at a minimum length of 720mm.										
Available Options	Nylon coating tooth side (PAZ)										
Tension Member Options	Steel standard VA301 Stainless Steel Hi-flex VA316 stainless steel Kevlar® available with SFX only										

Product Performance

Power Transmission	Rotational Speed	Peripheral Speed	Synchronous Pulley	Applications (Example)
≤ 5 kW	Approx. 20000 min ⁻¹	Approx. 80 ms ⁻¹	From z=15	Small power drives, handling technology

Specifications

Timing Belt	Pitch (mm)	Code	Ultimate Tensile Strength (N/10mm belt width)	Maximum Allowable Tensile Strength (N/10mm belt width)	Specific Belt Stiffness Steel Reinforced (Per unit width/length)	Specific Belt Mass (per 10mm belt width, steel reinforced)
AT-Series	AT3	BFX	1760	440	1.10 x 10 ⁵ N	0.022 kg/m

Minimum Number of Pulley Teeth and Idler Diameter

Pitch (mm)	Min. # of Pulley Teeth (no back bending)	Min. # of Pulley Teeth (with back bending)	Min. Diameter of Flat Idler running on tooth side (mm)	Min. Diameter of Flat Idler running on belt back (mm)
AT3	15	25	30	30

Standard Material

TPUST ¹⁾

Standard Lengths

Pitch/Length Version	Number of Teeth
AT3 / 150 SFX	50
AT3 / 201 SFX	67
AT3 / 252 SFX	84
AT3 / 267 SFX	89
AT3 / 270 SFX	90
AT3 / 300 SFX	100
AT3 / 351 SFX	117
AT3 / 399 SFX	133
AT3 / 417 SFX	139
AT3 / 450 SFX	150

Pitch/Length Version	Number of Teeth
AT3 / 501 SFX	167
AT3 / 549 SFX	183
AT3 / 600 SFX	200
AT3 / 639 SFX	213
AT3 / 720 BFX	240
AT3 / 816 SFX	272
AT3 / 819 BFX	273
AT3 / 900 SFX	300
AT3 / 918 BFX	306
AT3 / 1011 SFX	337

Pitch/Length Version	Number of Teeth
AT3 / 1017 BFX	339
AT3 / 1116 BFX	372
AT3 / 1215 BFX	405
AT3 / 1314 BFX	438
AT3 / 1413 BFX	471
AT3 / 1512 BFX	504
AT3 / 1611 BFX	537
AT3 / 1710 BFX	570

Stock Pulleys

Tooth Type	Number of Teeth	Outside Diameter	Pitch Circle Diameter	Face Width	Pilot Bore	Part Number
AT3	z	d _k (mm)	d _o (mm)	B (mm)	d _v (mm)	
BELT WIDTH = 6 mm	15	13.91	14.32	10	6	LS 16 AT3 / 15-2 hub 10x6
	16	14.87	15.28	10	6	LS 16 AT3 / 16-2 hub 10x6
	18	16.78	17.19	10	6	LS 16 AT3 / 18-2 hub 12x6
	20	18.69	19.10	10	6	LS 16 AT3 / 20-2 hub 14x6
	22	20.60	21.01	10	6	LS 16 AT3 / 22-2 hub 14x6
	24	22.51	22.92	10	6	LS 16 AT3 / 24-2 hub 14x6
	25	23.46	23.87	10	6	LS 16 AT3 / 25-2 hub 16x6
	27	25.37	25.78	10	6	LS 16 AT3 / 27-2 hub 16x6
	30	28.24	28.65	10	6	LS 16 AT3 / 30-2 hub 20x6
	32	30.15	30.56	10	6	LS 16 AT3 / 32-2 hub 20x6
	36	33.97	34.38	10	6	LS 16 AT3 / 36-2 hub 22x6
	40	37.79	38.20	10	6	LS 16 AT3 / 40-2 hub 26x6
	44	41.61	42.02	10	6	LS 16 AT3 / 44-0 hub 30x6
	45	42.56	42.97	10	6	LS 16 AT3 / 45-0 hub 30x6
BELT WIDTH = 10 mm	48	45.43	45.84	10	6	LS 16 AT3 / 48-0 hub 34x6
	60	56.89	57.30	10	6	LS 16 AT3 / 60-0 hub 38x6
	72	68.34	68.75	10	6	LS 16 AT3 / 72-0 hub 50x6
	15	13.91	14.32	15	6	LS 21 AT3 / 15-2 hub 10x6
	16	14.87	15.28	15	6	LS 21 AT3 / 16-2 hub 10x6
	18	16.78	17.19	15	6	LS 21 AT3 / 18-2 hub 12x6
	20	18.69	19.10	15	6	LS 21 AT3 / 20-2 hub 14x6
	22	20.60	21.01	15	6	LS 21 AT3 / 22-2 hub 14x6
	24	22.51	22.92	15	6	LS 21 AT3 / 24-2 hub 14x6
	25	23.46	23.87	15	6	LS 21 AT3 / 25-2 hub 16x6
	27	25.37	25.78	15	6	LS 21 AT3 / 27-2 hub 16x6
	30	28.24	28.65	15	6	LS 21 AT3 / 30-2 hub 20x6
	32	30.15	30.56	15	6	LS 21 AT3 / 32-2 hub 20x6
	36	33.97	34.38	15	6	LS 21 AT3 / 36-2 hub 22x6
BELT WIDTH = 16 mm	40	37.79	38.20	15	6	LS 21 AT3 / 40-2 hub 26x6
	44	41.61	42.02	15	6	LS 21 AT3 / 44-0 hub 30x6
	45	42.56	42.97	15	6	LS 21 AT3 / 45-0 hub 30x6
	48	45.43	45.84	15	6	LS 21 AT3 / 48-0 hub 34x6
	60	56.89	57.30	15	6	LS 21 AT3 / 60-0 hub 38x6
	72	68.34	68.75	15	6	LS 21 AT3 / 72-0 hub 50x6
	15	13.91	14.32	22	6	LS 28 AT3 / 15-2 hub 10x6
	16	14.87	15.28	22	6	LS 28 AT3 / 16-2 hub 10x6
	18	16.78	17.19	22	6	LS 28 AT3 / 18-2 hub 12x6
	20	18.69	19.10	22	6	LS 28 AT3 / 20-2 hub 14x6
	22	20.60	21.01	22	6	LS 28 AT3 / 22-2 hub 14x6
	24	22.51	22.92	22	6	LS 28 AT3 / 24-2 hub 14x6
	25	23.46	23.87	22	6	LS 28 AT3 / 25-2 hub 16x6
	27	25.37	25.78	22	6	LS 28 AT3 / 27-2 hub 16x6
30	28.24	28.65	22	6	LS 28 AT3 / 30-2 hub 20x6	
32	30.15	30.56	22	6	LS 28 AT3 / 32-2 hub 20x6	
36	33.97	34.38	22	6	LS 28 AT3 / 36-2 hub 22x6	
40	37.79	38.20	22	6	LS 28 AT3 / 40-2 hub 26x6	
44	41.61	42.02	22	6	LS 28 AT3 / 44-0 hub 30x6	
45	42.56	42.97	22	6	LS 28 AT3 / 45-0 hub 30x6	
48	45.43	45.84	22	6	LS 28 AT3 / 48-0 hub 34x6	
60	56.89	57.30	22	6	LS 28 AT3 / 60-0 hub 38x6	
72	68.34	68.75	22	6	LS 28 AT3 / 72-0 hub 50x6	

Ordering Example: Stock Pulleys

[MATERIAL] [WIDTH OVER HUB] [PITCH] / [# OF TEETH] [# OF FLANGES] [HUB DIAMETER] [HUB WIDTH]

LS 28 AT3 / 45 - 0 hub 30 x 6