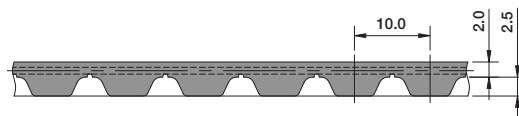
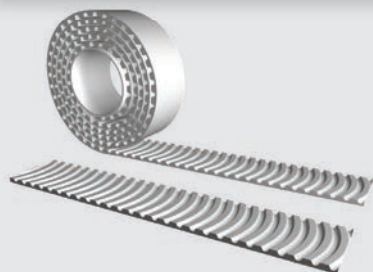


BAT10

M / V ARC-Power® Self-Tracking-SERIES



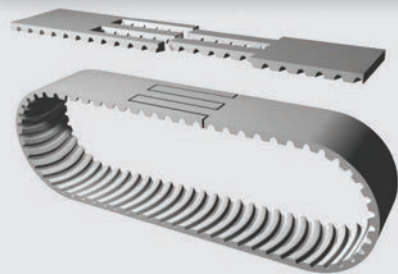
Open-Ended "M"



Specifications

Widths (mm) <small>In between widths available</small>	25	32	50	75	100
Lengths	Any lengths available - Stock rolls 50 meters				
Available Options	Nylon coating tooth side (PAZ), Nylon backing (PAR), Nylon both sides (PAZ-PAR), Polyurethane back cover (T-cover)				
Tension Member Options	Steel standard Hi-flex steel VA301 Stainless steel VA316 Hi-flex Stainless steel Kevlar®				

Spliced and Welded "V"



Specifications

Widths (mm) <small>In between widths available</small>	25	32	50	75	100
Min. Joined Length (mm) <small>Increasing in one tooth increments</small>	880	500	880		
Available Options	Nylon coating tooth side (PAZ), Nylon backing (PAR), Nylon both sides (PAZ-PAR), Polyurethane back cover (T-cover)				
Tension Member Options	Steel standard Hi-flex steel VA301 Stainless steel VA316 Hi-flex Stainless steel Kevlar®				

Specifications

Timing Belt	Pitch (mm)	Code	Ultimate Tensile Strength (N/10mm belt width)	Maximum Allowable Tensile Strength (N/10mm belt width)	Specific Belt Stiffness Steel Reinforced (Per unit width/length)	Specific Belt Mass (per 10mm belt width, steel reinforced)
ARC-Power® Series	BAT10	M V	6400 -	1600 850	4.00 x 10 ⁵ N -	0.058 kg/m

Minimum Number of Pulley Teeth and Idler Diameter

Pitch (mm)	Min. # of Pulley Teeth (no back bending)	Min. # of Pulley Teeth (with back bending)	Min. Diameter of Flat Idler running on tooth side (mm)	Min. Diameter of Flat Idler running on belt back (mm)
BAT10	20	25	60	120

Standard Material

TPUST1[®]

Product Performance

Power Transmission	Rotational Speed	Peripheral Speed	Synchronous Pulley	Applications (Example)
≤ 70 kW	ca. 10000 min ⁻¹	ca. 60 ms ⁻¹	ab z=15	Construction machines, pumps, paper-making machines, compressors, textile machines, roller-table drives

Ordering Example: Polyurethane Timing Belt

[WIDTH] [PITCH] / [LENGTH] [CONSTRUCTION]
75 BAT10 / 4000 M