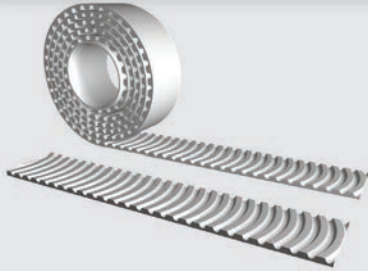


## Open-Ended "M"

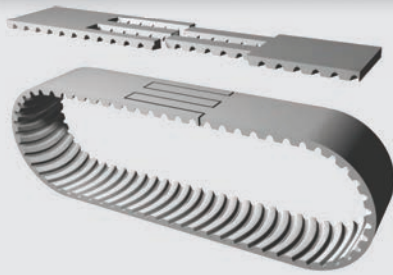
## Specifications



<b>Widths (mm)</b> <small>In between widths available</small>	50	75	100
<b>Lengths</b>	Any lengths available - Stock rolls 50 meters		
<b>Available Options</b>	Nylon coating tooth side (PAZ), Nylon backing (PAR), Nylon both sides (PAZ-PAR)		
<b>Tension Member Options</b>	Steel standard Hi-flex steel VA301 Stainless steel VA316 Hi-flex Stainless steel Kevlar®		

## Spliced and Welded "V"

## Specifications



<b>Widths (mm)</b> <small>In between widths available</small>	50	75	100
<b>Min. Joined Length (mm)</b> <small>Increasing in one tooth increments</small>	960		
<b>Available Options</b>	Nylon coating tooth side (PAZ), Nylon backing (PAR), Nylon both sides (PAZ-PAR)		
<b>Tension Member Options</b>	Steel standard Hi-flex steel VA301 Stainless steel VA316 Hi-flex Stainless steel Kevlar®		

### Minimum Number of Pulley Teeth and Idler Diameter

Pitch (mm)	Min. # of Pulley Teeth (no back bending)	Min. # of Pulley Teeth (with back bending)	Min. Diameter of Flat Idler running on tooth side (mm)	Min. Diameter of Flat Idler running on belt back (mm)
BAT15	20	30	100	150

### Standard Material

TPUST1<sup>2)</sup>

### Product Performance

Power Transmission	Rotational Speed	Peripheral Speed	Synchronous Pulley	Applications (Example)
≤ 140 kW	Approx. 8000 min <sup>-1</sup>	Approx. 48 ms <sup>-1</sup>	From z=15	Power drives, pumps, sanding machinery

Ordering Example: Polyurethane Timing Belt

[WIDTH] [PITCH] / [LENGTH] [CONSTRUCTION]

75 BAT15 / 4005 M