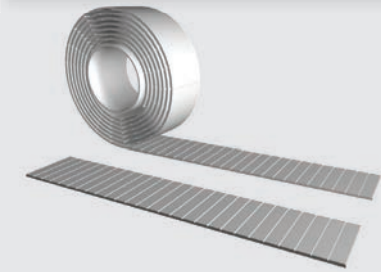




Open-Ended "M"

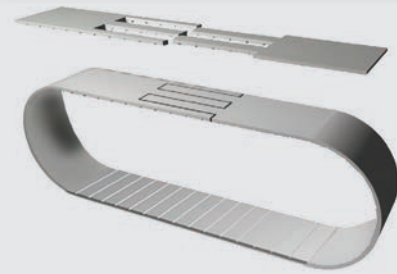
Specifications



Widths (mm) <small>In between widths available</small>	8	10	12	20
Lengths	Any lengths available - Stock rolls 50 meters			
Available Options	Nylon coating grooved side (PAZ)			
Tension Member Options	Steel standard			



Spliced and Welded "V"

Specifications



NOTE: Contact us for F1.0 spliced and welded belts.

Specifications

Timing Belt	Pitch (mm)	Code	Ultimate Tensile Strength (N/10mm belt width)	Maximum Allowable Tensile Strength (N/10mm belt width)	Specific Belt Stiffness Steel Reinforced (Per unit width/length)	Specific Belt Mass (per 10mm belt width, steel reinforced)	Min. # of Teeth on Pulley / Flat Idler Min. Ø no back bending	Min. # of Teeth on Pulley / Flat Idler Min. Ø with back bending
Flat Belt Series	F1.0	M V	1000 -	250 -	6.25 x 10 ⁴ N -	0.015 kg/m	 Ø16 / 16mm	 Ø30 / 30mm

Ordering Example: Polyurethane Timing Belt

[WIDTH] [PITCH] / [LENGTH] [CONSTRUCTION]

12 F1.0 / 1800 M