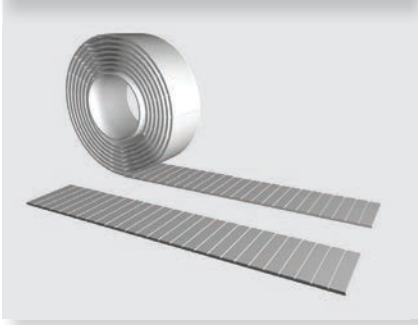




Open-Ended "M"

Specifications



Widths (mm) <small>In between widths available</small>	16	25	32	50	75	100
Lengths	Any lengths available - Stock rolls 30 meters					
Available Options	Nylon coating grooved side (PAZ), Nylon backing (PAR), Nylon both sides (PAZ-PAR)					
Tension Member Options	Steel standard Kevlar®					



Spliced and Welded "V"

Specifications



Widths (mm) <small>In between widths available</small>	16	25	32	50	75	100
Min. Joined Length (mm) <small>Increasing in 10mm increments</small>	880					
Available Options	Nylon coating grooved side (PAZ), Nylon backing (PAR), Nylon both sides (PAZ-PAR)					
Tension Member Options	Steel standard Kevlar®					

Specifications

Timing Belt	Pitch (mm)	Code	Ultimate Tensile Strength (N/10mm belt width)	Maximum Allowable Tensile Strength (N/10mm belt width)	Specific Belt Stiffness Steel Reinforced (Per unit width/length)	Specific Belt Mass (per 10mm belt width, steel reinforced)	Min. # of Teeth on Pulley / Flat Idler Min. Ø no back bending	Min. # of Teeth on Pulley / Flat Idler Min. Ø with back bending
Flat Belt Series	F2.0	M V	3360 -	840 420	2.1 x 10 ⁵ N -	0.030 kg/m	 Ø30 / 30mm	 Ø30 / 60mm

Standard Lengths

Pitch	Length
F2	1500
F2	1550
F2	1600
F2	1650
F2	1700
F2	1750

Pitch	Length
F2	1800
F2	1850
F2	1900
F2	1950
F2	2000
F2	2100

Pitch	Length
F2	2500
F2	3000
F2	4000
F2	5000

Ordering Example: Polyurethane Timing Belt

[WIDTH] [PITCH] / [LENGTH] [CONSTRUCTION]
50 F2.0 / 3000 M