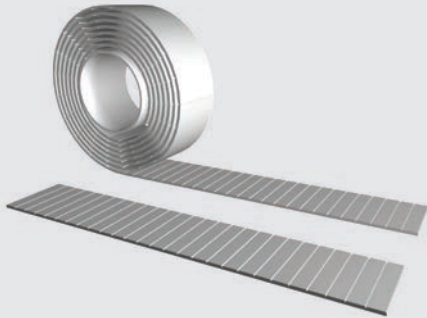




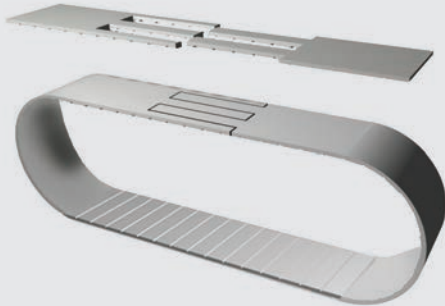
Open-Ended "M"



Specifications

Widths (mm) In between widths available	30
Lengths	Any lengths available - Stock rolls 50 meters
Available Options	Nylon coating grooved side (PAZ), Nylon backing (PAR), Nylon both sides (PAZ-PAR)
Tension Member Options	Steel standard

Spliced and Welded "V"



Specifications

Widths (mm) In between widths available	30
Min. Joined Length	880
Available Options	Nylon coating tooth side (PAZ), Nylon backing (PAR), Nylon both sides (PAZ-PAR)
Tension Member Options	Steel standard

Specifications

Timing Belt	Pitch (mm)	Code	Ultimate Tensile Strength (N/10mm belt width)	Maximum Allowable Tensile Strength (N/10mm belt width)	Specific Belt Stiffness Steel Reinforced (Per unit width/length)	Specific Belt Mass (per 10mm belt width, steel reinforced)	Min. # of Teeth on Pulley / Flat Idler Min. Ø no back bending	Min. # of Teeth on Pulley / Flat Idler Min. Ø with back bending
Flat Belt Series	F6.0	M	1600	400	1.00 x 10 ⁵ N	0.080 kg/m		Ø75 / 75mm
		V	-	200	-			
		BFX	-	-	-			

Ordering Example: Polyurethane Timing Belt

[WIDTH] [PITCH] / [LENGTH] [CONSTRUCTION]

30 F6.0 / 1800 V