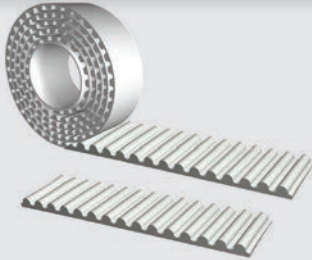


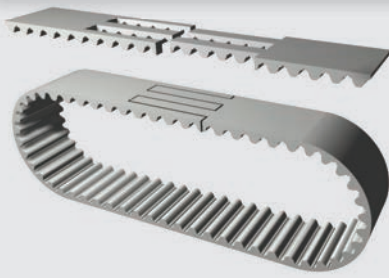
## Open-Ended "M"



### Specifications

<b>Widths (mm)</b> <small>In between widths available</small>	5	10	15	25	50
<b>Lengths</b>	Any lengths available - Stock rolls 30 meters				
<b>Available Options</b>	Nylon coating tooth side (PAZ), Nylon backing (PAR), Nylon both sides (PAZ-PAR)				
<b>Tension Member Options</b>	High Power (HP) Steel High Flex (HF) Steel				

## Spliced and Welded "V"



### Specifications

<b>Widths (mm)</b> <small>In between widths available</small>	25	50	75	100
<b>Min. Joined Length (mm)</b> <small>Increasing in one tooth increments</small>	400			500
<b>Available Options</b>	Nylon coating tooth side (PAZ), Nylon backing (PAR), Nylon both sides (PAZ-PAR)			
<b>Tension Member Options</b>	High Flex (HF) Steel			

### Specifications

Timing Belt	Pitch (mm)	Code	Ultimate Tensile Strength (N/10mm belt width)	Maximum Allowable Tensile Strength (N/10mm belt width)	Specific Belt Stiffness Steel Reinforced (Per unit width/length)	Specific Belt Mass (per 10mm belt width, steel reinforced)	Min. # of Teeth on Pulley / Flat Idler Min. Ø no back bending	Min. # of Teeth on Pulley / Flat Idler Min. Ø with back bending
HTD-Series	<b>HTD 5M</b>	M V	2600 -	650 -	1.63 x 10 <sup>5</sup> N -	0.041 kg/m	16 / 25mm	16 / 50mm

Ordering Example: Polyurethane Timing Belt

[WIDTH] [PITCH] / [LENGTH] [CONSTRUCTION] [CORD]  
**100** **HTD 5M** / **2000** **M** **HP**