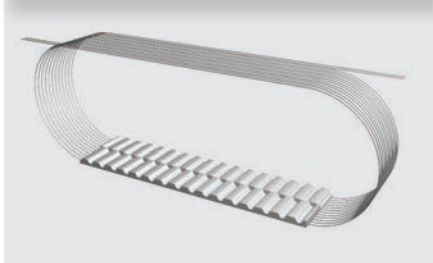


## Truly Endless "BFX"

## Specifications



<b>Widths (inches)</b> <small>In between widths available</small>	50	75	100
<b>Lengths</b>	See Standard Lengths Below Additional lengths available up to 21,990mm. In between lengths available starting at a minimum length of 1,500mm.		
<b>Available Options</b>	Nylon coating tooth side (PAZ)		
<b>Tension Member Options</b>	Steel standard Hi-flex steel VA301 Stainless steel		

### Minimum Number of Pulley Teeth and Idler Diameter

Pitch (mm)	Min. # of Pulley Teeth (no back bending)	Min. # of Pulley Teeth (with back bending)	Min. Diameter of Flat Idler running on tooth side (mm)	Min. Diameter of Flat Idler running on belt back (mm)
SFAT15	20	25	100	150

### Standard Material

TPUST1<sup>®</sup>

### Product Performance

Power Transmission	Rotational Speed	Peripheral Speed	Synchronous Pulley	Applications (Example)
≤ 135 kW	Approx. 8000 min <sup>-1</sup>	Approx. 48 ms <sup>-1</sup>	From z=20	Construction machines, pumps, paper-making machines, compressors

### Specifications

Timing Belt	Pitch (mm)	Code	Ultimate Tensile Strength (N/10mm belt width)	Maximum Allowable Tensile Strength (N/10mm belt width)	Specific Belt Stiffness Steel Reinforced (Per unit width/length)	Specific Belt Mass (per 10mm belt width, steel reinforced)
SFAT-Series	<b>SFAT15</b>	BFX	8480	2120	5.30 x 10 <sup>5</sup> N	0.087 kg/m

### Standard Lengths

Pitch/Length Version	Number of Teeth	Pitch/Length Version	Number of Teeth	Pitch/Length Version	Number of Teeth
SFAT15 / 1500 BFX	100	SFAT15 / 2790 BFX	186	SFAT15 / 5595 BFX	373
SFAT15 / 1590 BFX	106	SFAT15 / 3000 BFX	200	SFAT15 / 6000 BFX	400
SFAT15 / 1710 BFX	114	SFAT15 / 3495 BFX	233	SFAT15 / 6300 BFX	420
SFAT15 / 1800 BFX	120	SFAT15 / 3750 BFX	250	SFAT15 / 6705 BFX	447
SFAT15 / 1905 BFX	127	SFAT15 / 4005 BFX	167	SFAT15 / 7095 BFX	473
SFAT15 / 1995 BFX	133	SFAT15 / 4500 BFX	300	SFAT15 / 7500 BFX	500
SFAT15 / 2250 BFX	150	SFAT15 / 4995 BFX	333		
SFAT15 / 2505 BFX	167	SFAT15 / 5295 BFX	353		

Ordering Example: Polyurethane Timing Belt

[WIDTH] [PITCH] / [LENGTH] [CONSTRUCTION]  
75 SFAT15 / 6300 BFX