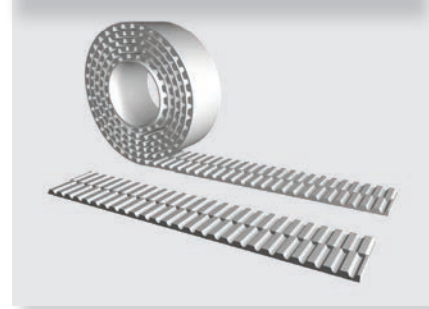


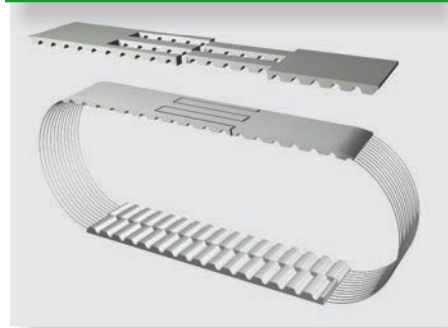
## Open-Ended "M"



## Specifications

NOTE: Contact us for SFAT15 open-ended belts.

## Spliced and Welded "V"



## Specifications

NOTE: Contact us for SFAT15 spliced and welded belts.

### Minimum Number of Pulley Teeth and Idler Diameter

Pitch (mm)	Min. # of Pulley Teeth (no back bending)	Min. # of Pulley Teeth (with back bending)	Min. Diameter of Flat Idler running on tooth side (mm)	Min. Diameter of Flat Idler running on belt back (mm)
SFAT15	20	25	100	150

### Standard Material

TPUST1<sup>1)</sup>

### Product Performance

Power Transmission	Rotational Speed	Peripheral Speed	Synchronous Pulley	Applications (Example)
≤ 135 kW	Approx. 8000 min <sup>-1</sup>	Approx. 48 ms <sup>-1</sup>	From z=20	Construction machines, pumps, paper-making machines, compressors

### Specifications

Timing Belt	Pitch (mm)	Code	Ultimate Tensile Strength (N/10mm belt width)	Maximum Allowable Tensile Strength (N/10mm belt width)	Specific Belt Stiffness Steel Reinforced (Per unit width/length)	Specific Belt Mass (per 10mm belt width, steel reinforced)
SFAT-Series	<b>SFAT15</b>	M V	- -	- -	- -	0.087 kg/m