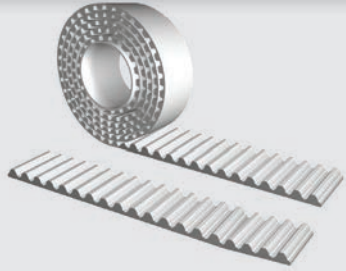


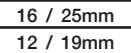
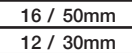
## Open-Ended "M"

## Specifications



<b>Widths (mm)</b> <small>In between widths available</small>	5	10	15	25	50
<b>Lengths</b>	Any lengths available - Stock rolls 30 meters				
<b>Available Options</b>	Nylon coating tooth side (PAZ), Nylon backing (PAR), Nylon both sides (PAZ-PAR)				
<b>Tension Member Options</b>	High Power (HP) Steel High Flex (HF) Steel				

## Specifications

Timing Belt	Pitch (mm)	Code	Ultimate Tensile Strength (N/10mm belt width)	Maximum Allowable Tensile Strength (N/10mm belt width)	Specific Belt Stiffness Steel Reinforced (Per unit width/length)	Specific Belt Mass (per 10mm belt width, steel reinforced)	Min. # of Teeth on Pulley / Flat Idler Min. Ø no back bending	Min. # of Teeth on Pulley / Flat Idler Min. Ø with back bending
HTD-Series	<b>STD S5M HP</b>	M	2600	650	$1.63 \times 10^5$ N	0.039 kg/m	 16 / 25mm	 16 / 50mm
HTD-Series	<b>STD S5M HF</b>	M	1200	300	$7.50 \times 10^4$ N	0.032 kg/m	 12 / 19mm	 12 / 30mm

Ordering Example: Polyurethane Timing Belt

[WIDTH] [PITCH] / [LENGTH] [CONSTRUCTION] [CORD]

50 STD S5M / 3000 M HF