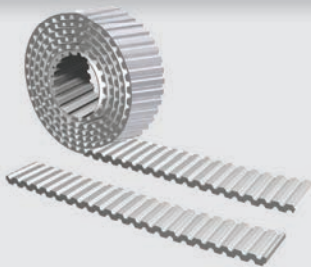


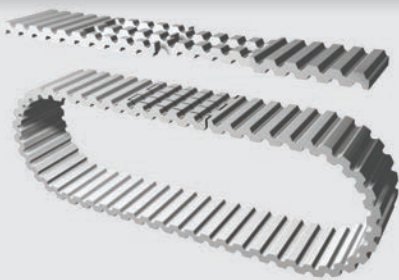
Open-Ended "M"



Specifications

Widths (mm) <small>In between widths available</small>	16	20	25	32	50	75	100
Lengths	Any lengths available - Stock rolls 50 meters						
Available Options	Nylon coating tooth side (PAZ) one side only						
Tension Member Options	Steel standard Hi-flex steel VA301 Stainless steel VA316 Hi-flex Stainless steel Kevlar®						

Spliced and Welded "V"



Specifications

Widths (mm) <small>In between widths available</small>	16	20	25	32	50	75	100
Min. Joined Length (mm) <small>Increasing in one tooth increments</small>	800				850		
Available Options	Nylon coating tooth side (PAZ) one side only						
Tension Member Options	Steel standard Hi-flex steel VA301 Stainless steel VA316 Hi-flex Stainless steel Kevlar®						

Specifications

Timing Belt	Pitch (mm)	Code	Ultimate Tensile Strength (N/10mm belt width)	Maximum Allowable Tensile Strength (N/10mm belt width)	Specific Belt Stiffness Steel Reinforced (Per unit width/length)	Specific Belt Mass (per 10mm belt width, steel reinforced)	Min. # of Teeth on Pulley / Flat Idler Min. Ø no back bending	Min. # of Teeth on Pulley / Flat Idler Min. Ø with back bending
Double Sided Series	T10 DL	M V	3520 -	880 440	2.20 x 10 ⁶ N -	0.058 kg/m	 20 / 60mm	 20 / 60mm

Ordering Example: Polyurethane Timing Belt

[WIDTH] [PITCH] / [LENGTH] [CONSTRUCTION]

75 T10 DL / 4000 M

Stock Pulleys

Tooth Type	Number of Teeth	Outside Diameter	Pitch Circle Diameter	Face Width	Pilot Bore	Part Number
T10	z	d _k (mm)	d _p (mm)	B (mm)	d _v (mm)	
BELT WIDTH = 16 mm	12	36.35	38.20	21	6	LS 31 T10-SE / 12-2 hub 28x10
	14	42.70	44.56	21	8	LS 31 T10-SE / 14-2 hub 32x10
	15	45.90	47.75	21	8	LS 31 T10-SE / 15-2 hub 32x10
	16	49.10	50.93	21	8	LS 31 T10-SE / 16-2 hub 35x10
	18	55.45	57.30	21	10	LS 31 T10-SE / 18-2 hub 40x10
	19	58.65	60.48	21	10	LS 31 T10-SE / 19-2 hub 44x10
	20	61.80	63.66	21	12	LS 31 T10-SE / 20-2 hub 46x10
	24	74.55	76.39	21	12	LS 31 T10 / 24-2 hub 58x10
	25	77.75	79.58	21	12	LS 31 T10 / 25-2 hub 60x10
	27	84.10	85.94	21	12	LS 31 T10 / 27-2 hub 60x10
	30	93.65	95.49	21	12	LS 31 T10 / 30-2 hub 60x10
	32	100.00	101.86	21	12	LS 31 T10 / 32-2 hub 65x10
	36	112.75	114.59	21	16	LS 31 T10 / 36-2 hub 70x10
	40	125.45	127.32	21	16	LS 31 T10 / 40-2 hub 80x10
48	150.95	152.79	21	16	LS 31 T10 / 48-0 hub 95x10	
60	189.15	190.99	21	16	LS 31 T10 / 60-0 hub 110x10	
BELT WIDTH = 25 mm	12	36.35	38.20	30	6	LS 40 T10-SE / 12-2 hub 28x10
	14	42.70	44.56	30	8	LS 40 T10-SE / 14-2 hub 32x10
	15	45.90	47.75	30	8	LS 40 T10-SE / 15-2 hub 32x10
	16	49.10	50.93	30	8	LS 40 T10-SE / 16-2 hub 35x10
	18	55.45	57.30	30	10	LS 40 T10-SE / 18-2 hub 40x10
	19	58.65	60.48	30	10	LS 40 T10-SE / 19-2 hub 44x10
	20	61.80	63.66	30	12	LS 40 T10-SE / 20-2 hub 46x10
	24	74.55	76.39	30	12	LS 40 T10 / 24-2 hub 58x10
	25	77.75	79.58	30	12	LS 40 T10 / 25-2 hub 60x10
	27	84.10	85.94	30	12	LS 40 T10 / 27-2 hub 60x10
	30	93.65	95.49	30	12	LS 40 T10 / 30-2 hub 60x10
	32	100.00	101.86	30	12	LS 40 T10 / 32-2 hub 65x10
	36	112.75	114.59	30	16	LS 40 T10 / 36-2 hub 70x10
	40	125.45	127.32	30	16	LS 40 T10 / 40-2 hub 80x10
48	150.95	152.79	30	16	LS 40 T10 / 48-0 hub 95x10	
60	189.15	190.99	30	16	LS 40 T10 / 60-0 hub 110x10	
BELT WIDTH = 32 mm	18	55.45	57.30	40	10	LS 50 T10-SE / 18-2 hub 40x10
	19	58.65	60.48	40	10	LS 50 T10-SE / 19-2 hub 44x10
	20	61.80	63.66	40	12	LS 50 T10-SE / 20-2 hub 46x10
	24	74.55	76.39	40	12	LS 50 T10 / 24-2 hub 58x10
	25	77.75	79.58	40	12	LS 50 T10 / 25-2 hub 60x10
	27	84.10	85.94	40	12	LS 50 T10 / 27-2 hub 60x10
	30	93.65	95.49	40	12	LS 50 T10 / 30-2 hub 60x10
	32	100.00	101.86	40	12	LS 50 T10 / 32-2 hub 65x10
	36	112.75	114.59	40	16	LS 50 T10 / 36-2 hub 70x10
	40	125.45	127.32	40	16	LS 50 T10 / 40-2 hub 80x10
BELT WIDTH = 50 mm	18	55.45	57.30	56	10	LS 66 T10-SE / 18-2 hub 40x10
	19	58.65	60.48	56	10	LS 66 T10-SE / 19-2 hub 44x10
	20	61.80	63.66	56	12	LS 66 T10-SE / 20-2 hub 46x10
	24	74.55	76.39	56	12	LS 66 T10 / 24-2 hub 58x10
	25	77.75	79.58	56	12	LS 66 T10 / 25-2 hub 60x10
	27	84.10	85.94	56	12	LS 66 T10 / 27-2 hub 60x10
	30	93.65	95.49	56	12	LS 66 T10 / 30-2 hub 60x10
	32	100.00	101.86	56	12	LS 66 T10 / 32-2 hub 65x10
	36	112.75	114.59	56	16	LS 66 T10 / 36-2 hub 70x10
	40	125.45	127.32	56	16	LS 66 T10 / 40-2 hub 80x10
	48	150.95	152.79	56	16	LS 66 T10 / 48-0 hub 95x10
	60	189.15	190.99	56	16	LS 66 T10 / 60-0 hub 110x10

Ordering Example: Stock Pulleys

[MATERIAL] [WIDTH OVER HUB] [PITCH] / [# OF TEETH] [# OF FLANGES] [HUB DIAMETER] [HUB WIDTH]

LS 66 T10 / 48 - 0 hub 95 x 10