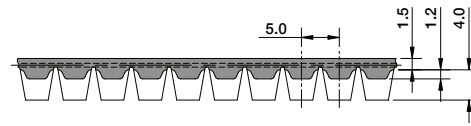


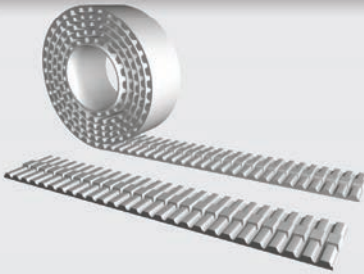
# ATK5K6

# M / V Self-Tracking-SERIES



## Open-Ended "M"

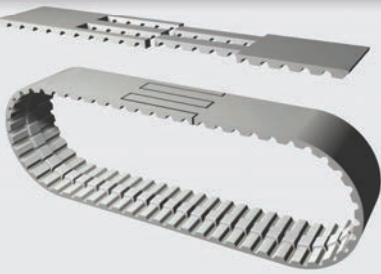
## Specifications



<b>Widths (mm)</b> <small>In between widths available</small>	25	32	50
<b>Lengths</b>	Any lengths available - Stock rolls 50 meters		
<b>Available Options</b>	Nylon coating tooth side (PAZ), Nylon backing (PAR), Nylon both sides (PAZ-PAR)		
<b>Tension Member Options</b>	Steel standard Hi-flex steel VA301 Stainless steel VA316 Hi-flex Stainless steel Kevlar®		

## Spliced and Welded "V"

## Specifications

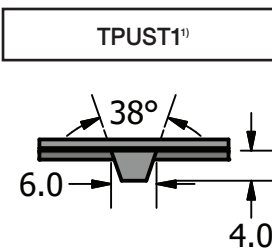


<b>Widths (mm)</b> <small>In between widths available</small>	25	32	50
<b>Min. Joined Length (mm)</b> <small>Increasing in one tooth increments</small>	1,000		
<b>Available Options</b>	Nylon coating tooth side (PAZ), Nylon backing (PAR), Nylon both sides (PAZ-PAR)		
<b>Tension Member Options</b>	Steel standard Hi-flex steel VA301 Stainless steel VA316 Hi-flex Stainless steel Kevlar®		

### Minimum Number of Pulley Teeth and Idler Diameter

Pitch (mm)	Min. # of Pulley Teeth (no back bending)	Min. # of Pulley Teeth (with back bending)	Min. Diameter of Flat Idler running on tooth side (mm)	Min. Diameter of Flat Idler running on belt back (mm)
ATK5K6	20	20	60	80

### Standard Material



Ordering Example: Polyurethane Timing Belt

[WIDTH] [PITCH] / [LENGTH] [CONSTRUCTION]

50 ATK5K6 / 4000 M