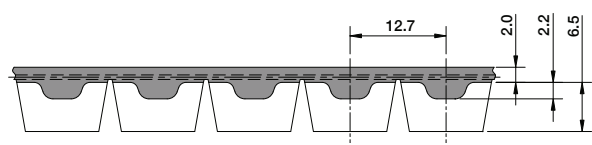


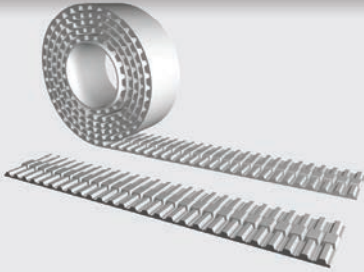
HK13

M / V Self-Tracking-SERIES



Open-Ended "M"

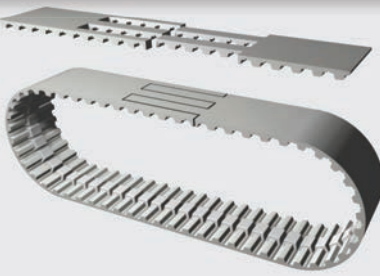
Specifications



Widths (inches) <small>In between widths available</small>	1.0	1.5	2.0	3.0	4.0
Widths (mm)	25.4	38.1	50.8	76.2	101.6
Lengths	Any lengths available - Stock rolls 50 meters				
Available Options	Nylon coating tooth side (PAZ), Nylon backing (PAR), Nylon both sides (PAZ-PAR), Polyurethane cover (T-cover)				
Tension Member Options	Steel standard Hi-flex steel VA301 Stainless steel VA316 Hi-flex Stainless steel Kevlar®				

Spliced and Welded "V"

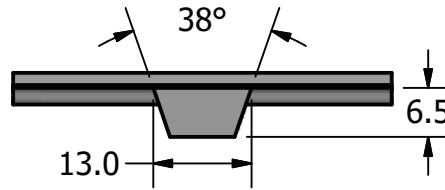
Specifications



Widths (inches) <small>In between widths available</small>	1.0	1.5	2.0	3.0	4.0
Widths (mm)	25.4	38.1	50.8	76.2	101.6
Min. Joined Length (mm) <small>Increasing in one tooth increments</small>	508 mm (20")				
Available Options	Nylon coating tooth side (PAZ), Nylon backing (PAR), Nylon both sides (PAZ-PAR), Polyurethane cover (T-cover)				
Tension Member Options	Steel standard Hi-flex steel VA301 Stainless steel VA316 Hi-flex Stainless steel Kevlar®				

Minimum Number of Pulley Teeth and Idler Diameter

Pitch (mm)	Min. # of Pulley Teeth (no back bending)	Min. # of Pulley Teeth (with back bending)	Min. Diameter of Flat Idler running on tooth side (mm)	Min. Diameter of Flat Idler running on belt back (mm)
HK13	18	20	80	120



Ordering Example: Polyurethane Timing Belt

[WIDTH] [PITCH] / [LENGTH] [CONSTRUCTION]

EX 1: 50.8 HK13 / 2032 M

EX 2: 800 HK13 / 200 M

Stock Pulleys

Tooth Type	Number of Teeth	Outside Diameter d _o (mm)	Pitch Circle Diameter d _p (mm)	Face Width B (mm)	Pilot Bore d _v (mm)	Part Number						
HK13	z	d _o (mm)	d _p (mm)	B (mm)	d _v (mm)							
						BELT WIDTH = 50.8 mm	20	79.48	80.85	55	12	AL 55 HK13 / 20-0 no hub
							24	95.65	97.02	55	12	AL 55 HK13 / 24-0 no hub
							25	99.69	101.06	55	15	AL 55 HK13 / 25-0 no hub
							27	107.78	109.15	55	15	AL 55 HK13 / 27-0 no hub
							30	119.90	121.28	55	15	AL 55 HK13 / 30-0 no hub
							32	127.99	129.36	55	20	AL 55 HK13 / 32-0 no hub
							36	144.16	145.53	55	20	AL 55 HK13 / 36-0 no hub
							40	160.33	161.70	55	20	AL 55 HK13 / 40-0 no hub
							48	192.67	194.04	55	20	AL 55 HK13 / 48-0 no hub
60	241.18	242.55	55	20	AL 55 HK13 / 60-0 no hub							
BELT WIDTH = 101.6mm	z	d _o (mm)	d _p (mm)	B (mm)	d _v (mm)							
						20	79.48	80.85	105	12	AL 105 HK13 / 20-0 no hub	
						24	95.65	97.02	105	12	AL 105 HK13 / 24-0 no hub	
						25	99.69	101.06	105	15	AL 105 HK13 / 25-0 no hub	
						27	107.78	109.15	105	15	AL 105 HK13 / 27-0 no hub	
						30	119.90	121.28	105	15	AL 105 HK13 / 30-0 no hub	
						32	127.99	129.36	105	20	AL 105 HK13 / 32-0 no hub	
						36	144.16	145.53	105	20	AL 105 HK13 / 36-0 no hub	
						40	160.33	161.70	105	20	AL 105 HK13 / 40-0 no hub	
						48	192.67	194.04	105	20	AL 105 HK13 / 48-0 no hub	
60	241.18	242.55	105	20	AL 105 HK13 / 60-0 no hub							