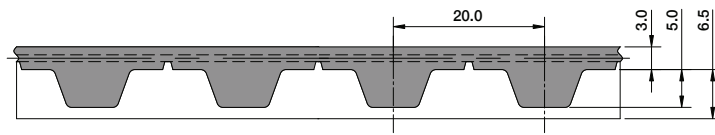
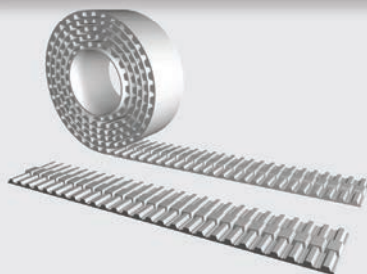


TK20K13

M / V Self-Tracking-SERIES



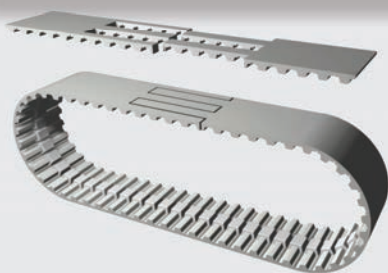
Open-Ended "M"



Specifications

Widths (mm) <small>In between widths available</small>	32	50	75	100	150
Lengths	Any lengths available - Stock rolls 50 meters				
Available Options	Nylon coating tooth side (PAZ), Nylon backing (PAR), Nylon both sides (PAZ-PAR), Polyurethane back cover (T-cover), Extra thick (DR)				
Tension Member Options	Steel standard Hi-flex steel VA301 Stainless steel VA316 Hi-flex Stainless steel Kevlar®				

Spliced and Welded "V"



Specifications

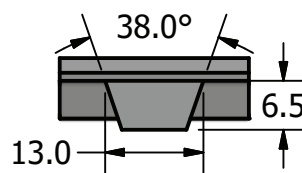
Widths (mm) <small>In between widths available</small>	32	50	75	100	150
Min. Joined Length (mm) <small>Increasing in one tooth increments</small>	1,000				
Available Options	Nylon coating tooth side (PAZ), Nylon backing (PAR), Nylon both sides (PAZ-PAR), Polyurethane back cover (T-cover), Extra thick (DR)				
Tension Member Options	Steel standard Hi-flex steel VA301 Stainless steel VA316 Hi-flex Stainless steel Kevlar®				

Minimum Number of Pulley Teeth and Idler Diameter

Pitch (mm)	Min. # of Pulley Teeth (no back bending)	Min. # of Pulley Teeth (with back bending)	Min. Diameter of Flat Idler running on tooth side (mm)	Min. Diameter of Flat Idler running on belt back (mm)
TK20K13	18	25	120	180

Standard Material

TPUST1¹⁾



Ordering Example: Polyurethane Timing Belt

[WIDTH] [PITCH] / [LENGTH] [CONSTRUCTION]

75 TK20K13 / 4000 M